



# The University of Texas at Dallas

Student Union and Student Success Center

## Construction: *Student Success and Student Union*

### Student Success Center

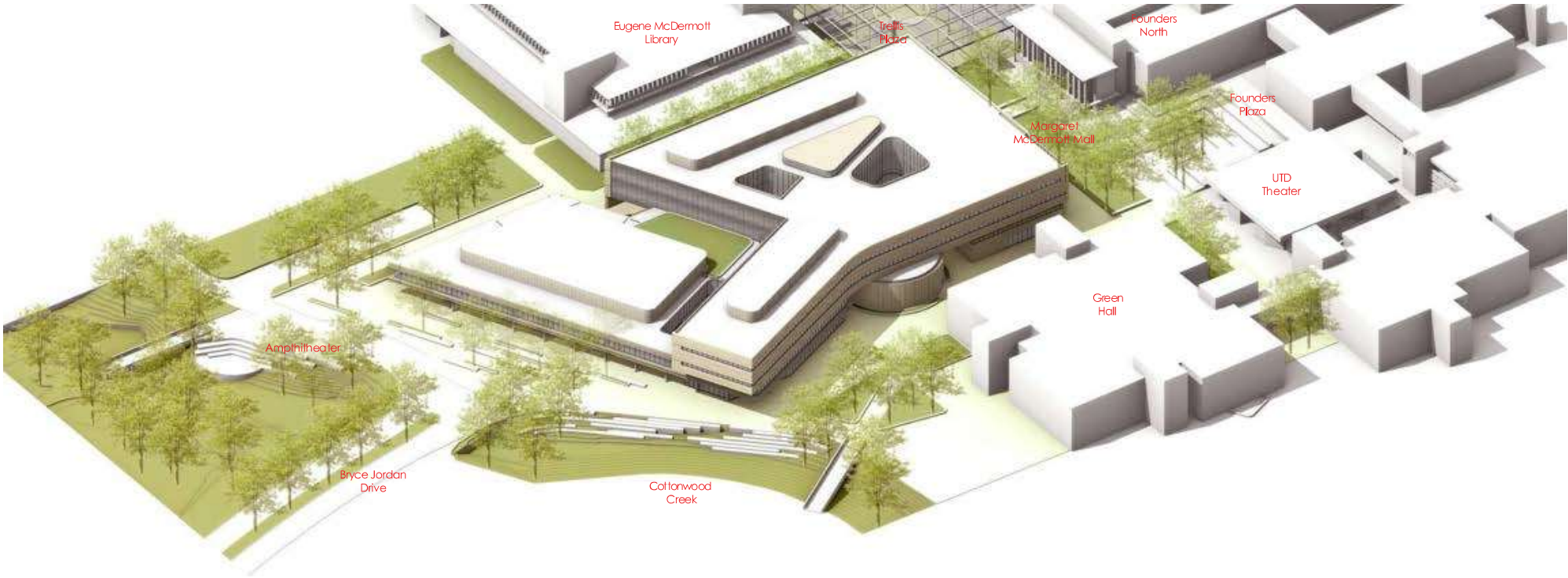
- \$103M total cost (*estimated*)
- 135,730 *gross square feet*
- 84,153 *actual square feet*

### Student Union

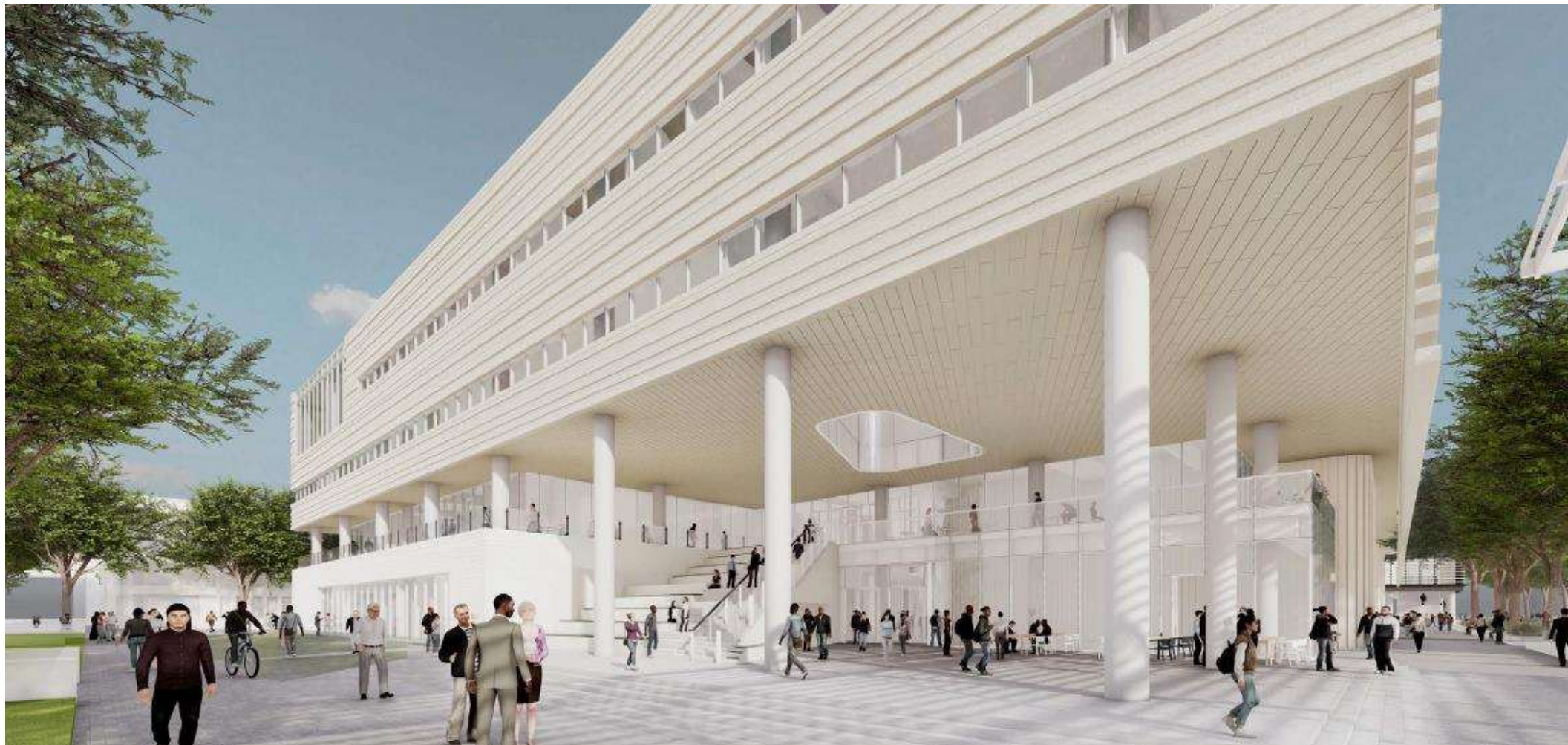
- \$187M total cost (*estimated*)
- 225,000 *gross square feet*
- 144,452 *actual square feet*

*Total Building Area: 360,730 (GSF)*

Site Footprint



West Entry Plaza

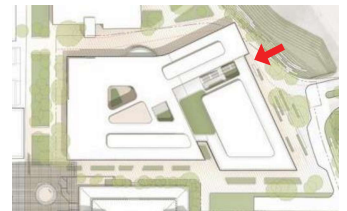


# Southwest Lightwell Options

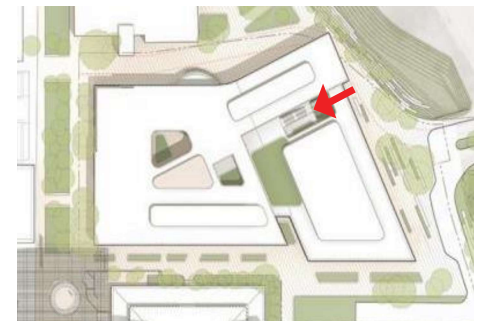
View from Second Level West Terrace

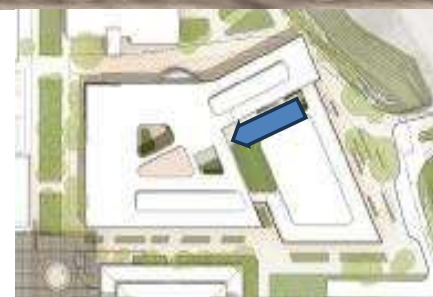


Exterior Architecture  
Porosity at East Entry Plaza Extends Landscape Up Through Building



Exterior Architecture  
Exterior Terraces Framed by Transparency Orchestrate Movement Up Through Building



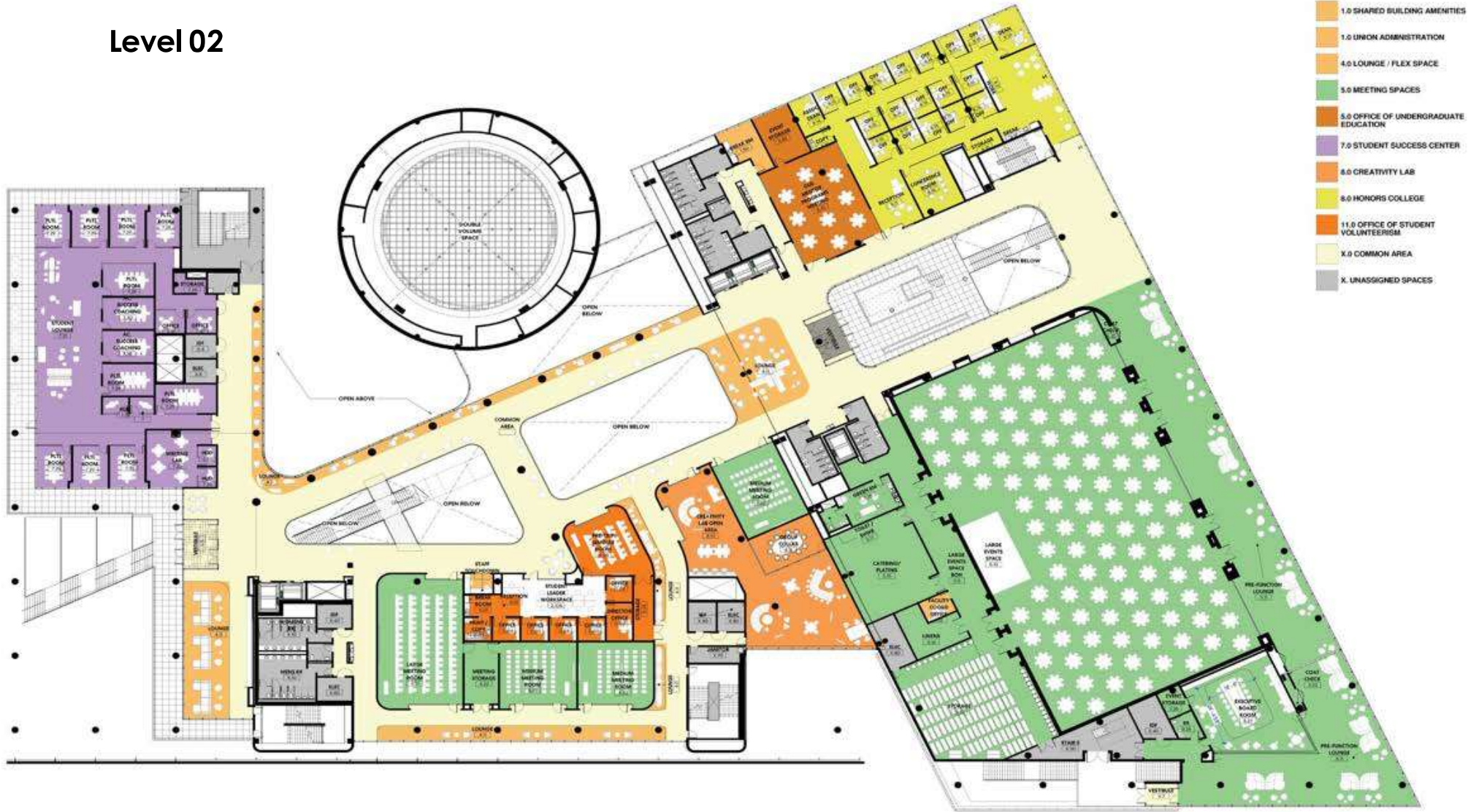








# Level 02



# Level 03



- 1.0 SHARED BUILDING AMENITIES
- 2.0 CLASSROOMS
- 3.0 FRATERNITY AND SORORITY LIFE
- 4.0 CONFERENCE AND Huddle SPACES
- 4.0 LOUNGE / FLEX SPACE
- 5.0 MEETING SPACES
- 5.0 OFFICE OF UNDERGRADUATE EDUCATION
- X.0 COMMON AREA
- X. UNASSIGNED SPACES

# Level 04

